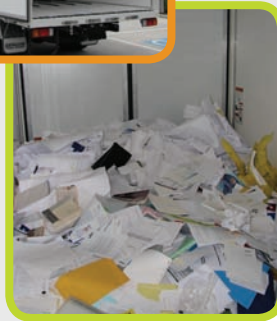


AXO-CT

Collection Truck

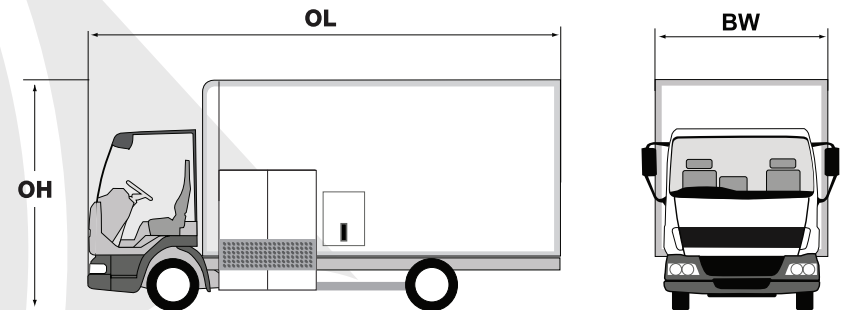


☎ +64 4 499 3028

🏠 NZ / Australia

✉ info@axoshredders.com.au

- Delivers reduced operator costs compared with transporting multiple bins
- Available in two chassis options:
 - Hino 300 8.5ton GVW - ideal for metropolitan areas
 - Hino 500 10.4ton GVW - the perfect all-round vehicle.
- Equipped with high-speed single or double lifter
- Bin lifter suitable to carry 2 x 140 or 2 x 240 or 2 x 360 Litre Bins
- Inward Bin Loading Doors and chamber protected from the elements.
- CCTV in loading and payload areas, and reversing camera
- Bin storage available for up to 4 x 240 Litre Bins



STANDARD FEATURES

FRP Box Body
 Inward Bin Loading Doors
 Multi Option Bin Lifter [140 / 240 / 360 Litre Bins]
 Live Floor Unload System
 Integrated External Control Panel
 Payload Viewing Camera [Mounted in the Control Panel]
 Remote Engine Start / Stop
 Bin Storage Area

VEHICLE SPECIFICATIONS

	Hino 300 8.5ton GVW	Hino 500 10.4ton GVW
Overall Length (OL)	7200mm	8760mm
Overall Height (OH)	3220mm	3220mm
Body Width (BW)	2380mm	2450mm
Payload	3000kgs	5000kgs